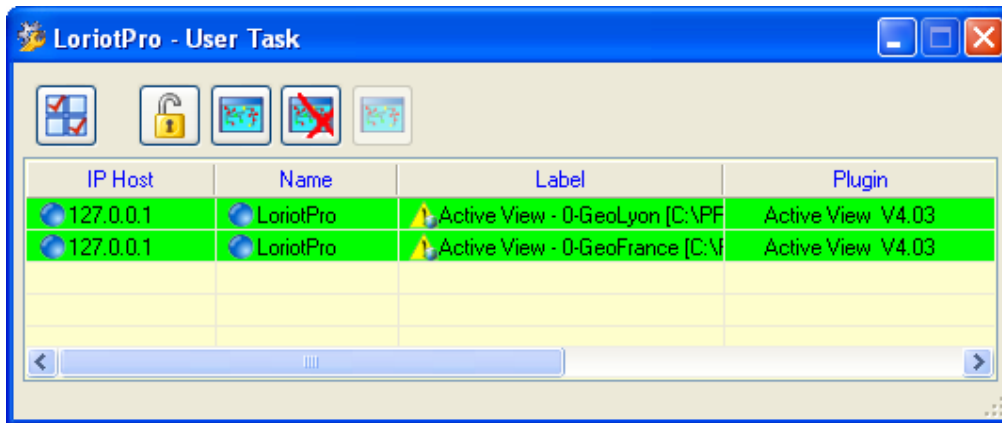


## Console Access Management

With the user task manager it is now possible to control the LorientPro Console access. There are two profiles available, the **administrator** profile and the **user** profile. The administrator profile has all features and control console access and the user profile has a restricted access to a set of tasks (plug-in).

Remark: A LorientPro console can be used by only one Windows user at anytime. The LorientPro console is launched by default with the administrator profile. There is no relation between the Windows users and the LorientPro current user profile.

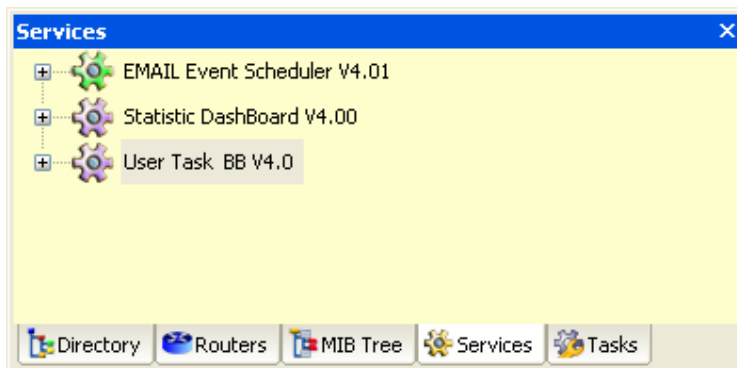
On the following example, a user access interface at startup. The user is able to launch the two predefined Active View only.



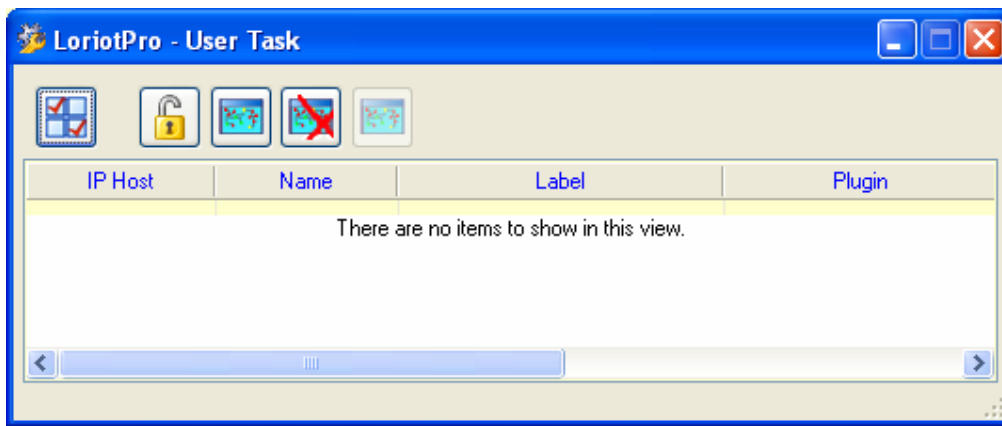
## Adding User access control to the LorientPro console

By default the LorientPro console has no user access control. It is not required to log before accessing the console. The security access should be done at the Windows user level.

To add a new level of security to LorientPro you can use the User Task service Plugin. To launch it select the service tab in the Workspace and insert the User Task plugin.



Right after you should have the new plugin in the list and the User Task screen should pop up.



### Configuring the user profile

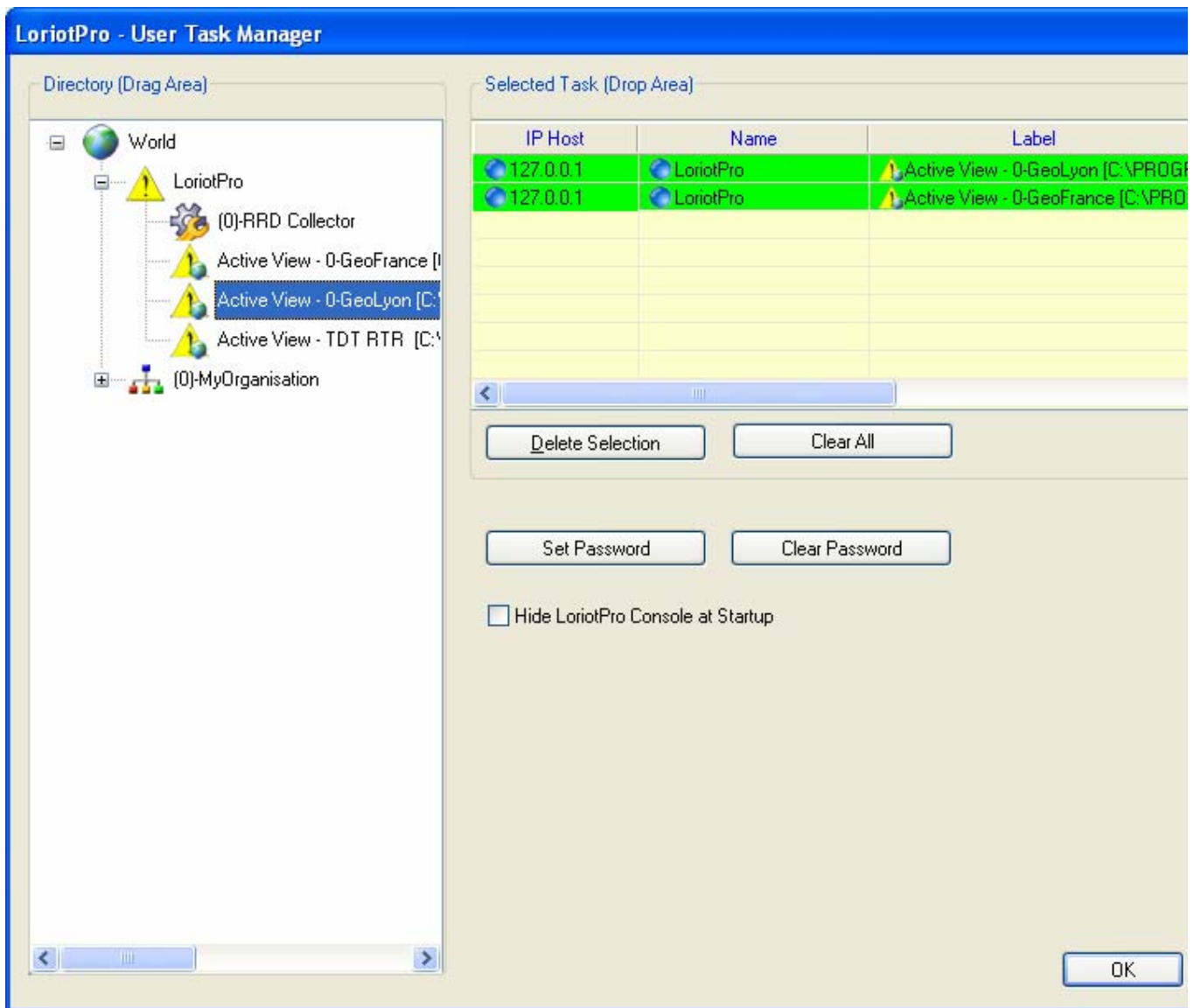
The configuration of the user interface is performed with the User Task Manager by the administrator only.



The icon give the administrator access to the configuration screen below:


The tasks that are allowed to the user are drag from the directory area and drop into the “Selected Task” area.

The Hide LorientPro console at startup removes the possibility for the user to see the LorientPro Console.




When LorientPro start the User task screen is displayed. The applications (plug-in) in the list are accessible with a single click,



The  icon prompts for the administrator password.

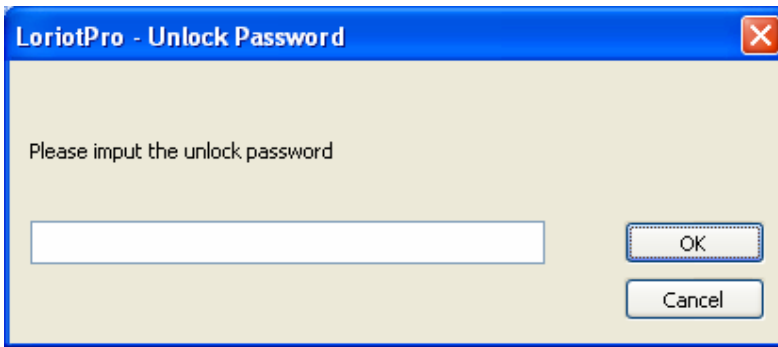


The   icons display or hide the Inter Network Map of LorientPro

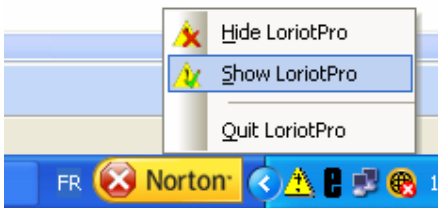


To switch back to the administrator profile you should click on the  icon.

The administrator's password is requested.



When the console is hidden the LoriotPro icon is still visible in the windows task bar. A click on the Sshow LoriotPro option will prompt for the administrator password too.



If the user profile opens an Active View , the Active View configuration button with prompt for the Administrator password.

Active View - 0-GeoFrance [C:\PROGRA-1\LUTEUS\LORIOT-2\bin\config\active-view\0-GeoFrance.cmp]

File Edit Display Format Shape Help

20%

LoriotPro - Unlock Password

Please input the unlock password

OK Cancel

LoriotPro - User Task

IP Host	Name	Label	Plugin
127.0.0.1	LoriotPro	Active View - 0-GeoFrance [C:\N	Active View

Geo localisation

Thread Started Thread\_1 Started

The screenshot shows the 'Active View' application window. The main area displays a map of France with several red location markers. A 'LoriotPro - Unlock Password' dialog box is open, prompting the user to enter a password. Below it, the 'LoriotPro - User Task' dialog box is visible, containing a table with columns for IP Host, Name, Label, and Plugin. The first row of the table is highlighted in green and contains the values '127.0.0.1', 'LoriotPro', and 'Active View - 0-GeoFrance [C:\N...'. At the bottom of the application, a status bar shows 'Thread Started' and 'Thread\_1 Started'.